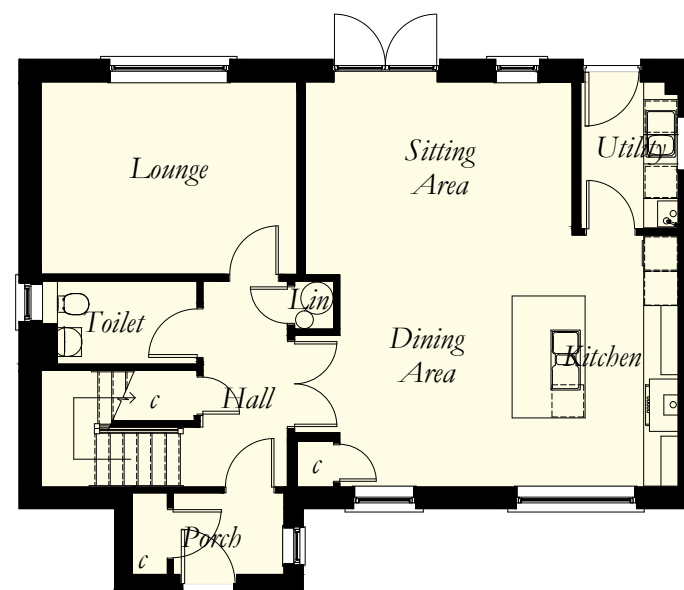
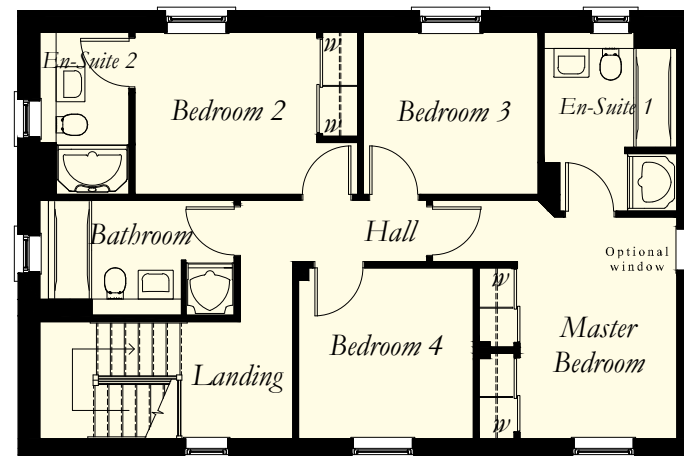




GROSEBAY 4 Bedroom Detached Villa



Room Sizes

Ground Floor

Lounge	4395 x 3310	(14'5" x 10'10")	
Kitchen/Dining	5825 x 4335	(19'1" x 14'2")	Maximum Sizes
Sitting Area	4590 x 3320	(15'0" x 10'10")	Maximum Sizes
Toilet	2680 x 1430	(8'9" x 4'8")	Maximum Sizes
Utility	1680 x 2530	(5'6" x 8'3")	
Porch	1900 x 1400	(6'2" x 4'7")	

First Floor

Master Bedroom	2700 x 3800	(8'10" x 12'5")	Plus door recess
En Suite 1	2290 x 3070	(7'6" x 10'0")	Maximum Sizes
Bedroom 2	3125 x 2780	(10'3" x 9'1")	Plus door recess
En Suite 2	1535 x 2780	(5'0" x 9'1")	Maximum Sizes
Bedroom 3	3000 x 2780	(9'10" x 9'1")	
Bedroom 4	3000 x 2935	(9'10" x 9'7")	
Bathroom	3385 x 1980	(11'1" x 6'5")	Maximum Sizes

N.B. Room Sizes Exclude Wardrobes

Gross Floor Area 156.60 Sq M 1686 Sq Ft