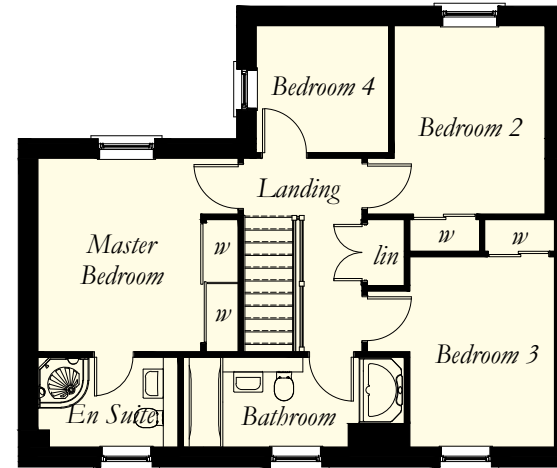


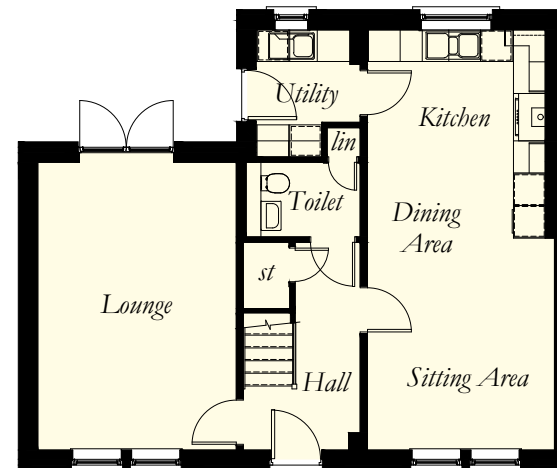


KIRKCAIG

4 Bedroom Detached Villa



First Floor



Ground Floor

Room Sizes

Ground Floor

Lounge	3748 x 5435	(12'3" x 17'9")	
Kitchen/Dining	3357 x 3936	(11'0" x 12'9")	
Sitting Area	3532 x 4000	(11'6" x 13'1")	
Utility	1964 x 2398	(6'4" x 7'8")	Maximum Sizes
Toilet	2155 x 1413	(7'1" x 4'6")	

First Floor

Master Bedroom	3080 x 3655	(10'1" x 11'9")	Excluding Door Recess
En Suite	2650 x 1700	(8'7" x 5'6")	Maximum Sizes
Bedroom 2	2855 x 3557	(9'3" x 11'7")	
Bedroom 3	2730 x 3596	(8'9" x 11'8")	Excluding Door Recess
Bedroom 4	2500 x 2398	(8'2" x 7'8")	
Bathroom	4170 x 1700	(13'7" x 5'6")	Maximum Sizes

N.B. Room Sizes Exclude Wardrobes

Gross Floor Area 133.12 Sq M 1432 Sq Ft