



KIRKCAIG

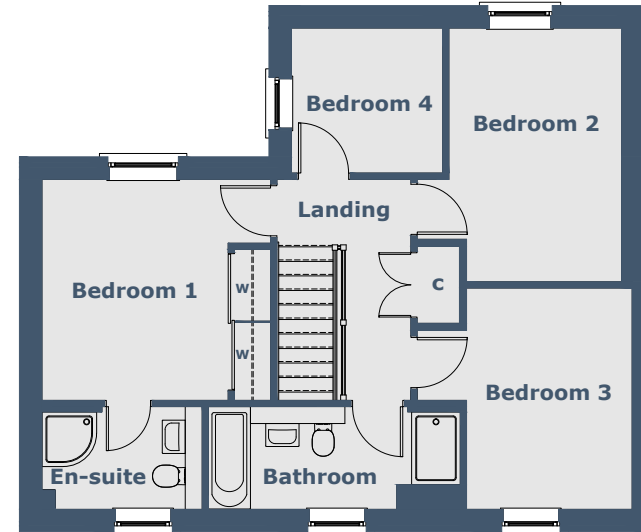
4 Bedroom Detached Villa

Room Sizes

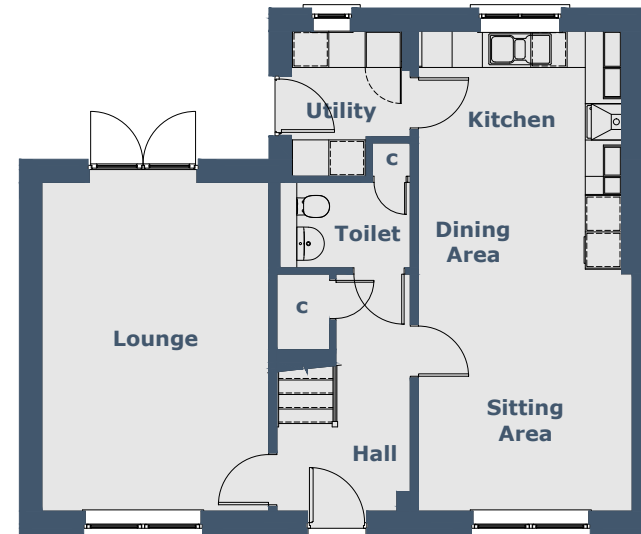
Ground Floor	Metric (mm)	Imperial (ft/in)	
Lounge	3745 x 5435	12'3" x 17'9"	
Kitchen/Dining	3355 x 4010	11'0" x 13'1"	
Sitting Area	3530 x 3920	11'6" x 12'10"	
Utility	1960 x 2395	6'5" x 7'10"	Maximum Sizes
Toilet	2155 x 1410	7'0" x 4'7"	
First Floor			
Bedroom 1	3080 x 3655	10'1" x 11'11"	
En Suite	2650 x 1700	8'8" x 5'6"	Maximum Sizes
Bedroom 2	2855 x 4195	9'4" x 13'9"	Excludes Door Recess
Bedroom 3	2735 x 3660	8'11" x 12'0"	Excludes Door Recess
Bedroom 4	2500 x 2395	8'2" x 7'10"	
Bathroom	4170 x 1700	13'8" x 5'6"	Maximum Sizes

N.B. Room Sizes Exclude Wardrobes

Gross Floor Area 133.37m² (1436ft²)



First Floor Plan



Ground Floor Plan