



LOYAL 5 Bedroom Detached Villa

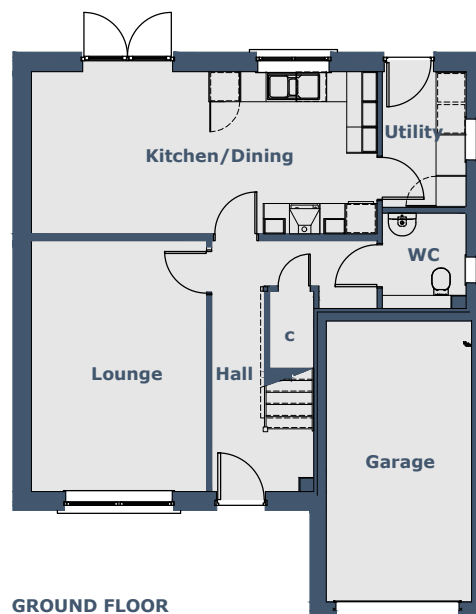


Room Sizes

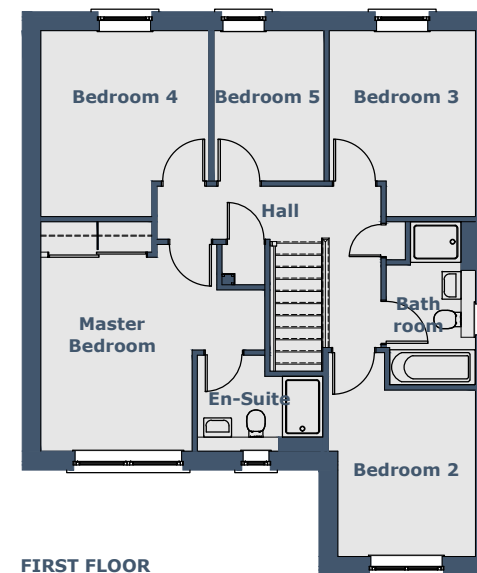
Ground Floor	Metric (mm)	Imperial (ft/in)	
Lounge	3468 x 4990	11'4" x 16'4"	
Kitchen/Dining	6849 x 3218	22'5" x 10'6"	
Utility	1667 x 2694	5'5" x 8'10"	
Toilet	1667 x 1902	5'5" x 6'2"	
Garage	2880 x 5576	9'5" x 18'3"	
First Floor			
Master Bedroom	3851 x 4443	12'7" x 14'6"	Maximum sizes
En Suite	1776 x 2379	5'9" x 7'9"	Excluding shower recess
Bedroom 2	2730 x 3302	8'11" x 10'9"	
Bedroom 3	2900 x 3689	9'6" x 12'1"	Maximum sizes
Bedroom 4	3689 x 3334	12'1" x 10'11"	Maximum sizes
Bedroom 5	2180 x 2987	7'1" x 9'9"	
Bathroom	2489 x 1908	8'1" x 6'3"	

N.B. Room Sizes Exclude Wardrobes

Gross Floor Area 138.43m² (1490ft²)



GROUND FLOOR



FIRST FLOOR