



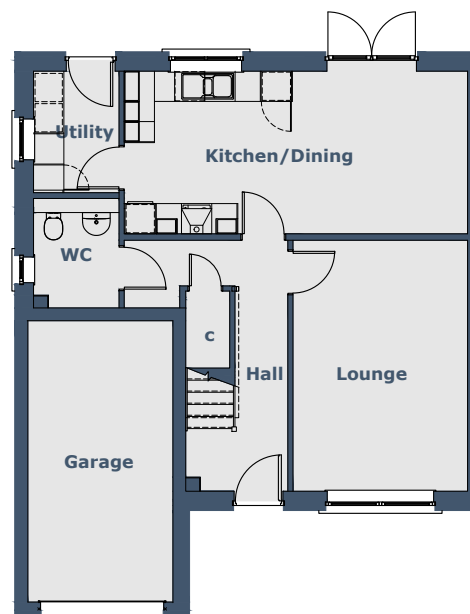
LOYAL *5 Bedroom Detached Villa*

Room Sizes

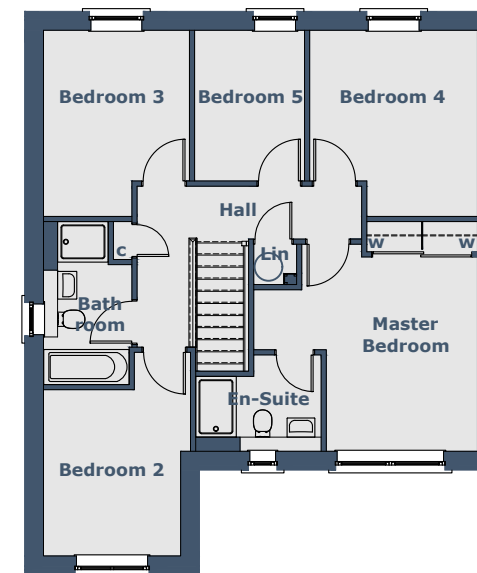
Ground Floor	Metric (mm)	Imperial (ft/in)	
Lounge	3465 x 4980	11'4" x 16'4"	
Kitchen/Dining	6810 x 3230	22'4" x 10'7"	
Utility	1695 x 2410	5'6" x 7'10"	
Toilet	1695 x 2170	5'6" x 7'1"	
Garage	2880 x 5580	9'5" x 18'3"	
First Floor			
Master Bedroom	4440 x 3855	14'6" x 12'7"	Maximum sizes
En Suite	1685 x 1915	5'6" x 6'3"	Excluding shower recess
Bedroom 2	2720 x 3300	8'11" x 10'9"	Excluding door recess
Bedroom 3	2895 x 3695	9'5" x 12'1"	Maximum sizes
Bedroom 4	3330 x 3695	10'11" x 12'1"	Maximum sizes
Bedroom 5	2180 x 2990	7'1" x 9'9"	
Bathroom	1755 x 2380	5'9" x 7'9"	Excluding shower recess

N.B. Room Sizes Exclude Wardrobes

Gross Floor Area 138.34m² (1489ft²)



GROUND FLOOR



FIRST FLOOR